

ICE & WATER SHIELD TO LAP OVER GUTTER FLANGE AS SHOWN

GUTTER LINER TO MATCH ROOF PANEL

INSTALLER NOTE:
FILL PANEL PENCIL RIBS WITH CAULK AT KEYHOLE CLOSURE LINE

BEMO SLIDING HOOK CLIP

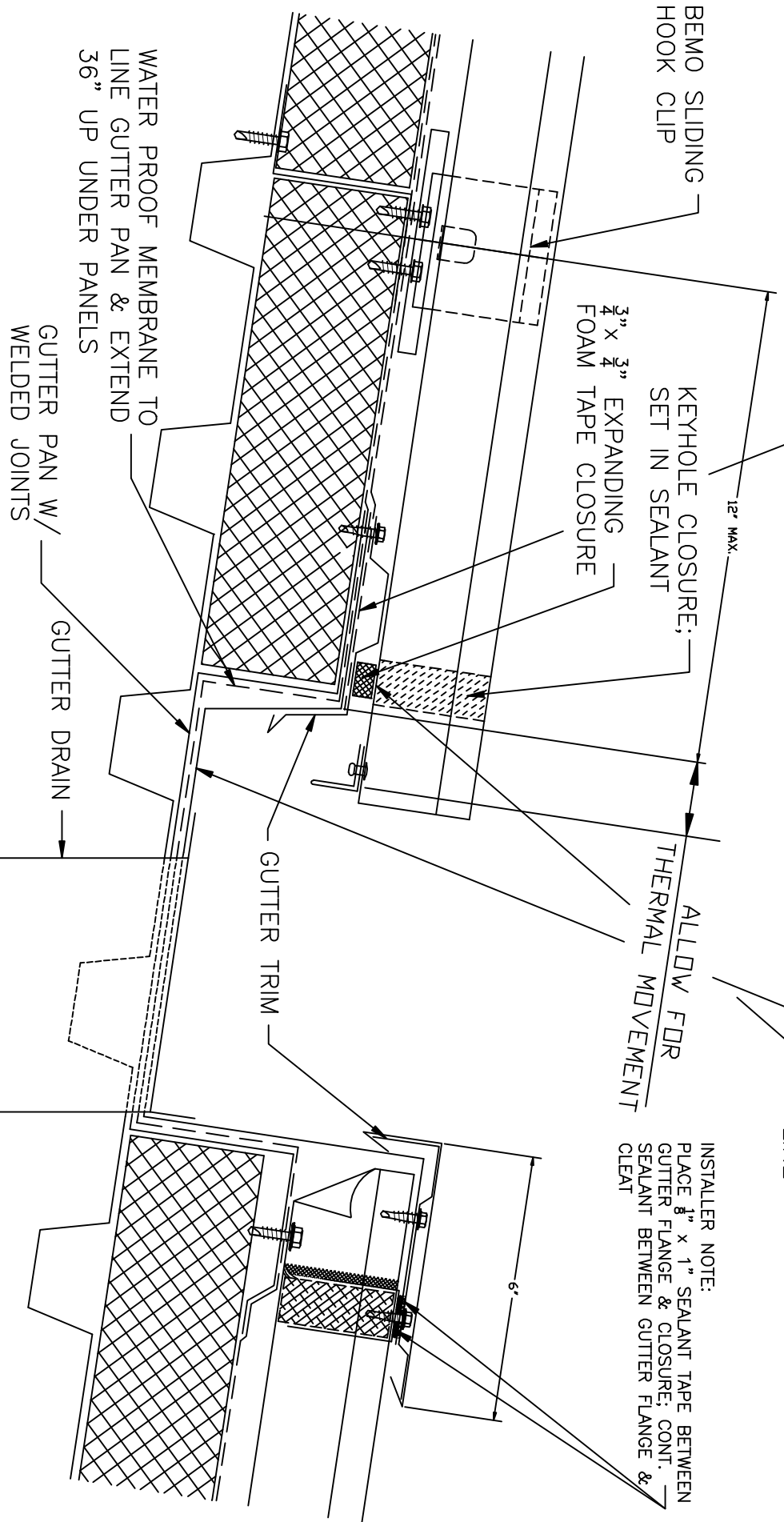
KEYHOLE CLOSURE; SET IN SEALANT

$\frac{3}{4}$ " x $\frac{3}{4}$ " EXPANDING FOAM TAPE CLOSURE

12" MAX.

ALLOW FOR THERMAL MOVEMENT

INSTALLER NOTE:
PLACE $\frac{3}{8}$ " x 1" SEALANT TAPE BETWEEN GUTTER FLANGE & CLOSURE; CONT. SEALANT BETWEEN GUTTER FLANGE & CLEAT



WATER PROOF MEMBRANE TO LINE GUTTER PAN & EXTEND 36" UP UNDER PANELS

GUTTER PAN W/ WELDED JOINTS

GUTTER DRAIN

GUTTER TRIM



PANEL:

BEMO

DATE:

09/20/01

DETAIL:

INTERNAL GUTTER

PAGE:

1 OF 1